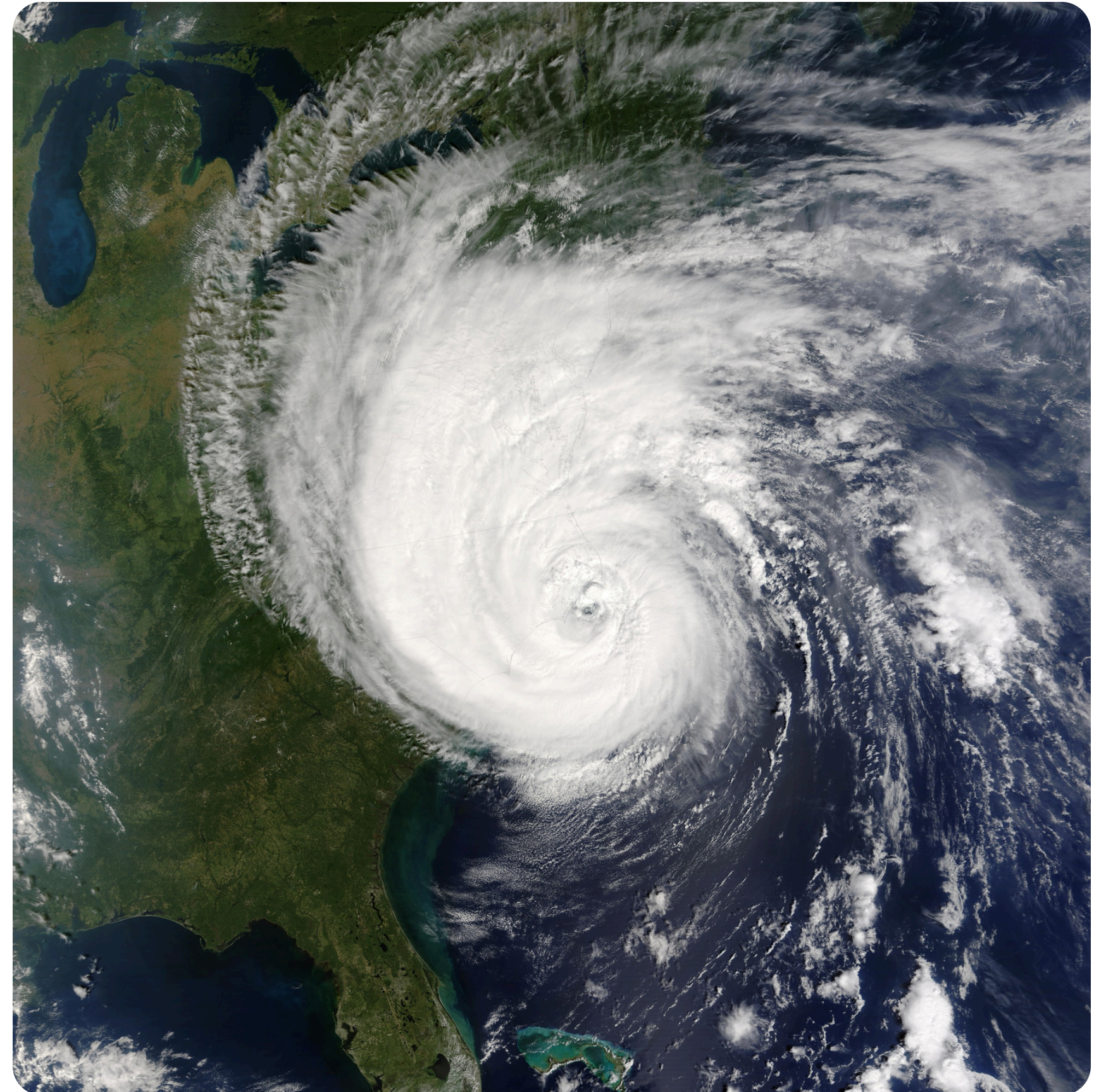


The Disproportionate Impacts of Extreme Weather Events on First Nations Australians

Minderoo - Fire and Flood Resilience

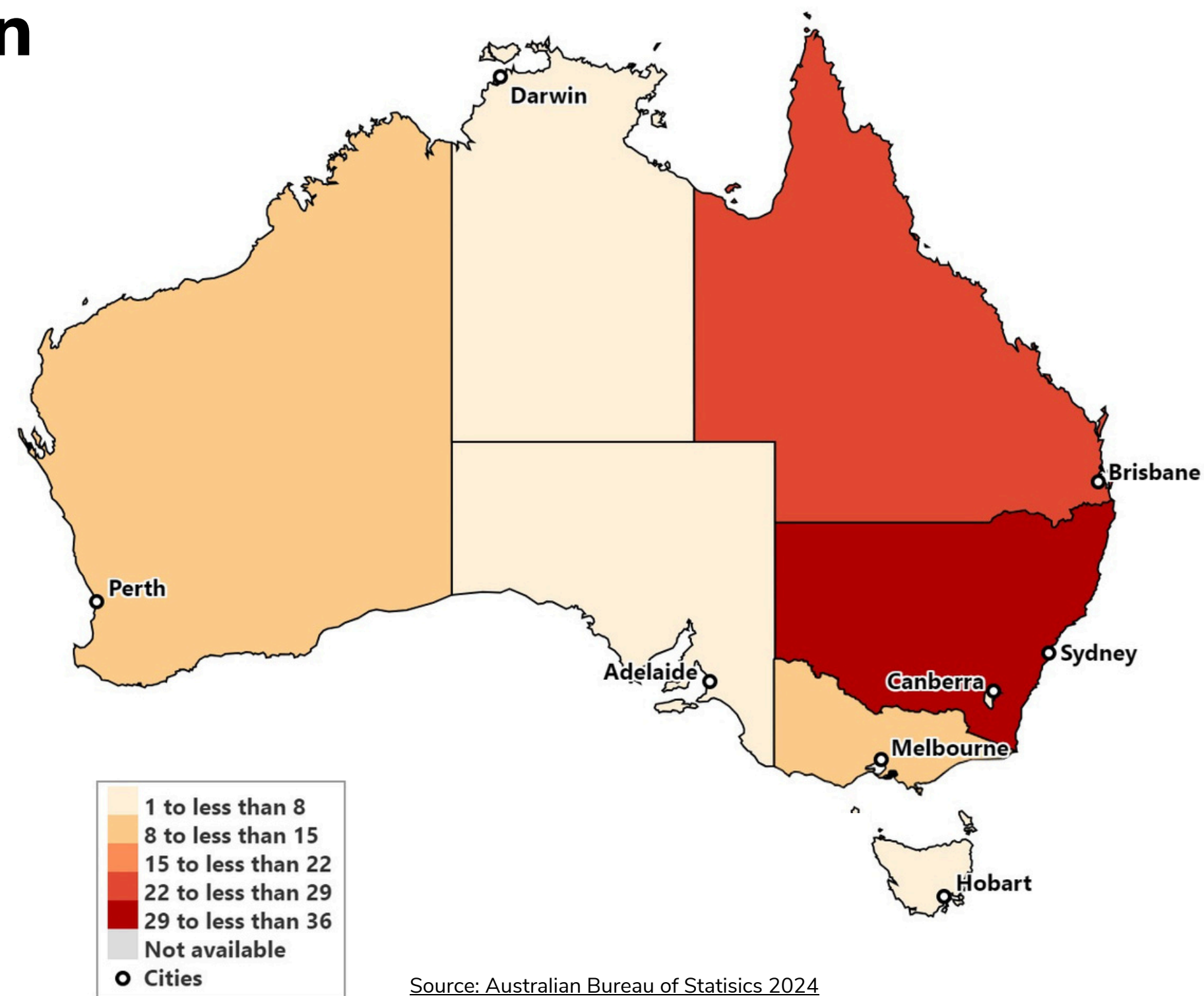


Distribution of Aboriginal and Torres Strait Islander population

by state and territory of usual residence (2021)

- Over a third of the Aboriginal and Torres Strait Islander population lived in Major Cities of Australia (401,700 people).
- One quarter (24.8%) of the Aboriginal and Torres Strait Islander population (244,000 people) lived in Inner Regional Australia.
- 187,200 Aboriginal and Torres Strait Islander people (19.0%) lived in Outer Regional Australia.
- The remaining 15.4% of the Aboriginal and Torres Strait Islander population lived in Remote (58,700 people or 6.0%) and Very Remote (92,100 people or 9.4%) Australia.

(Australian Bureau of Statistics, 2024)



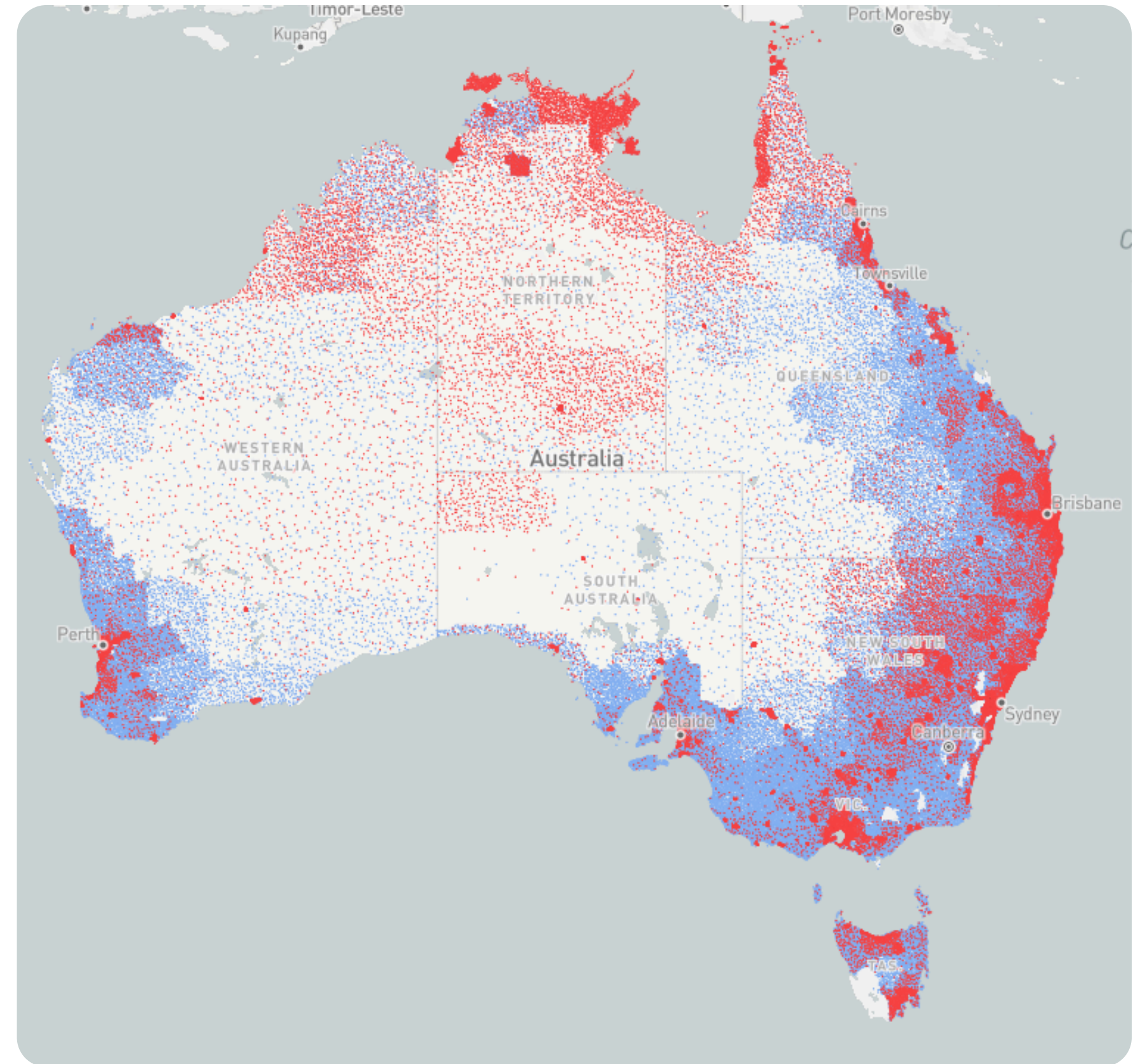
Source: Australian Bureau of Statistics 2024

Australia's Population

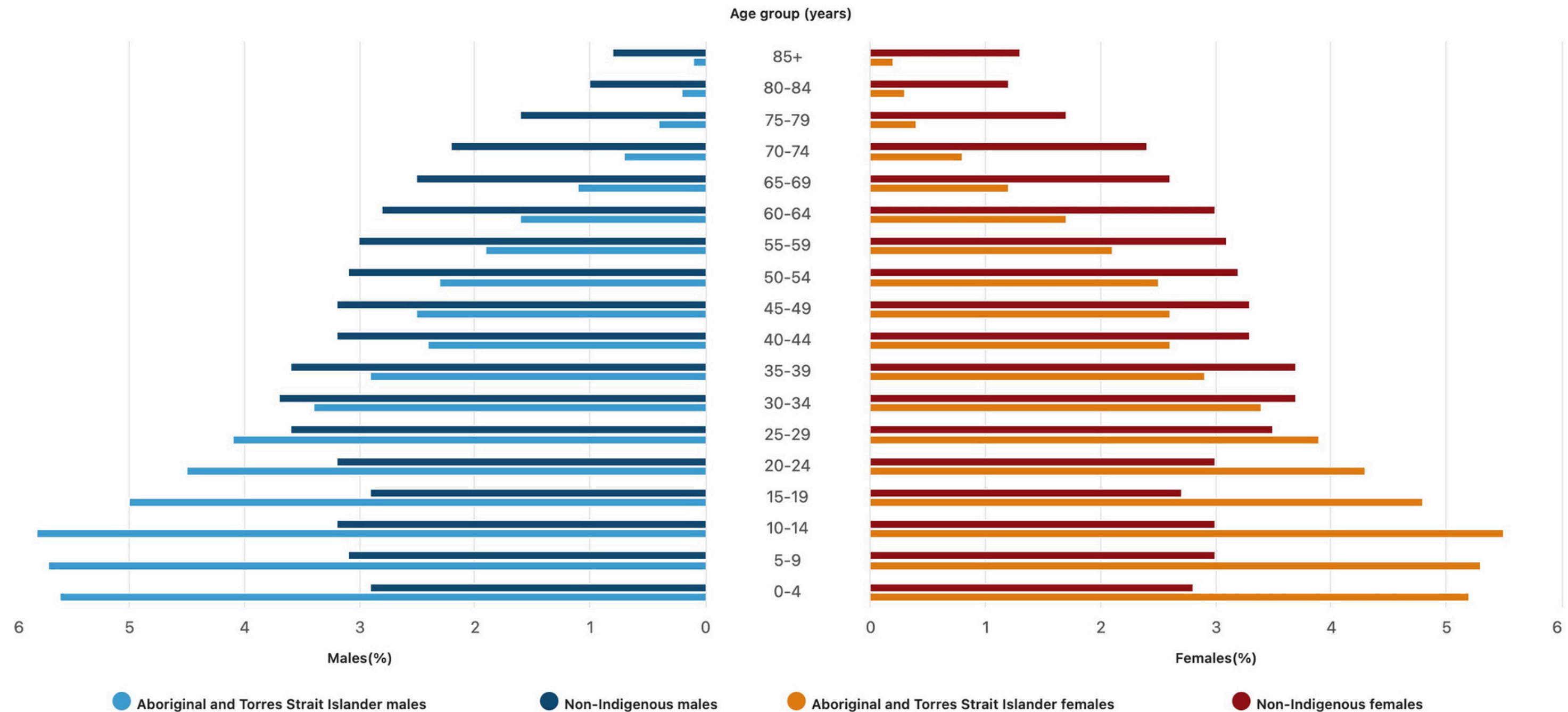
This map based on the 2016 census data shows individuals identifying as Aboriginal and Torres Strait Islander (as red dots), and all other Australians (as blue dots).

Comparing this map to the previous map we can see that while the Northern Territory is identified as 'place of usual residency' by less than 8% of the Aboriginal and Torres Strait Islander population, there are proportionally more Aboriginal and Torres Strait Islander peoples than other Australians.

This higher density is consistent across the north of Australia.



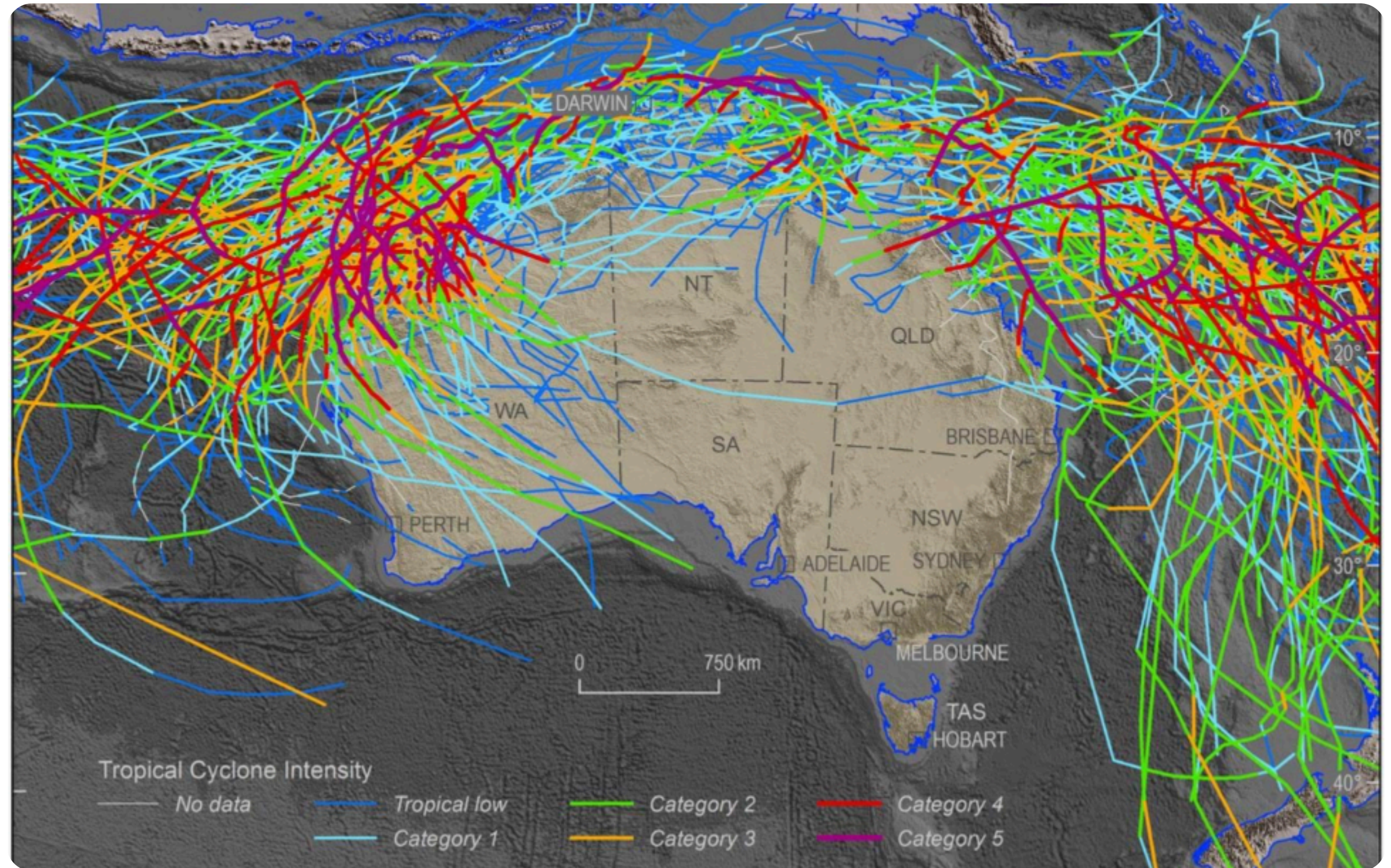
Aboriginal and Torres Strait Islander and non-Indigenous populations by age groups



Source: Australian Bureau of Statistics, Estimates of Aboriginal and Torres Strait Islander Australians 30 June 2021

Source: <https://www.abs.gov.au/statistics/people/aboriginal-and-torres-strait-islander-peoples/estimates-aboriginal-and-torres-strait-islander-australians/latest-release>

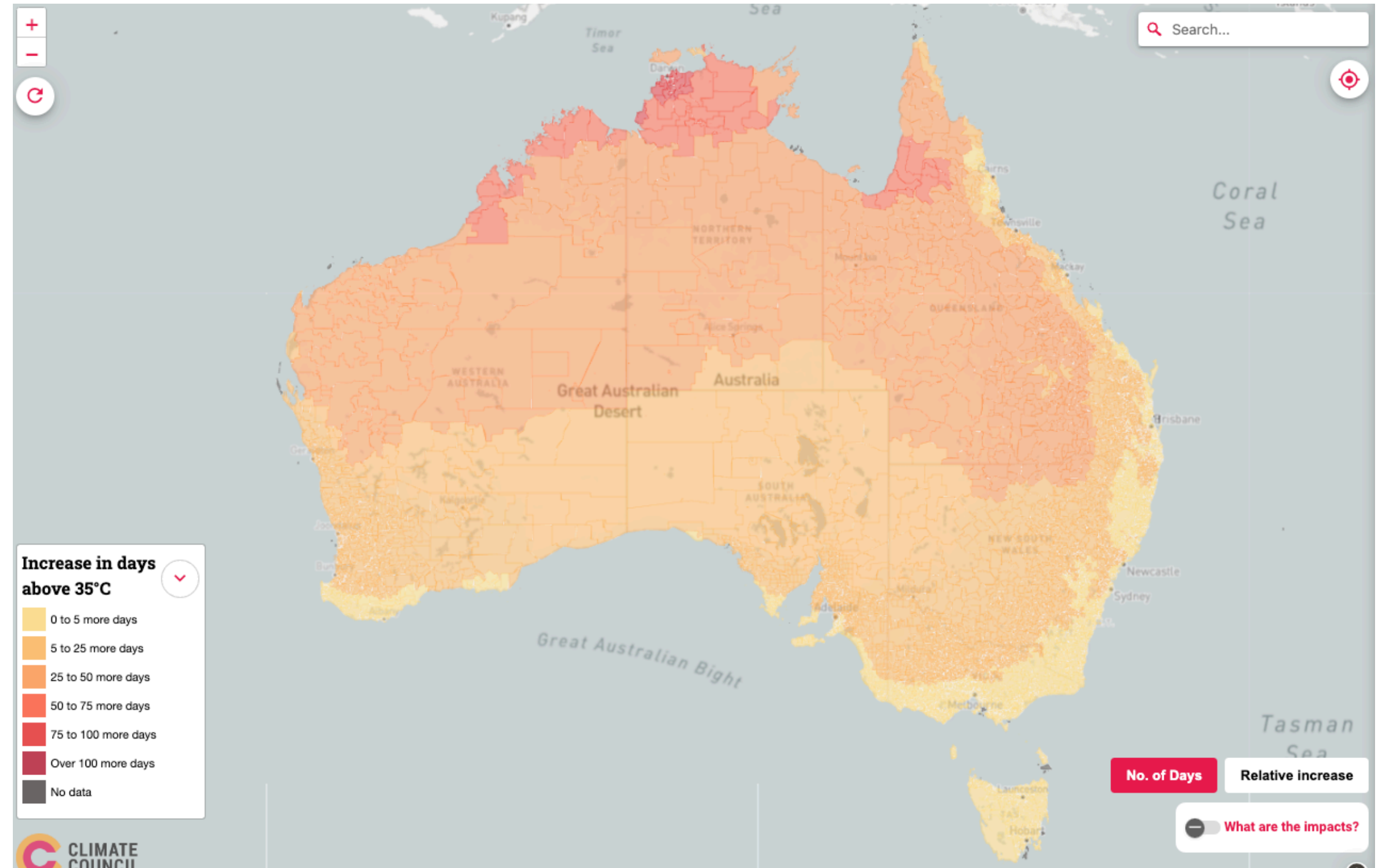
Trace lines of probable tropical cyclone scenarios



Source: [Geoscience Australia](#)

Climate Heat Map of Australia

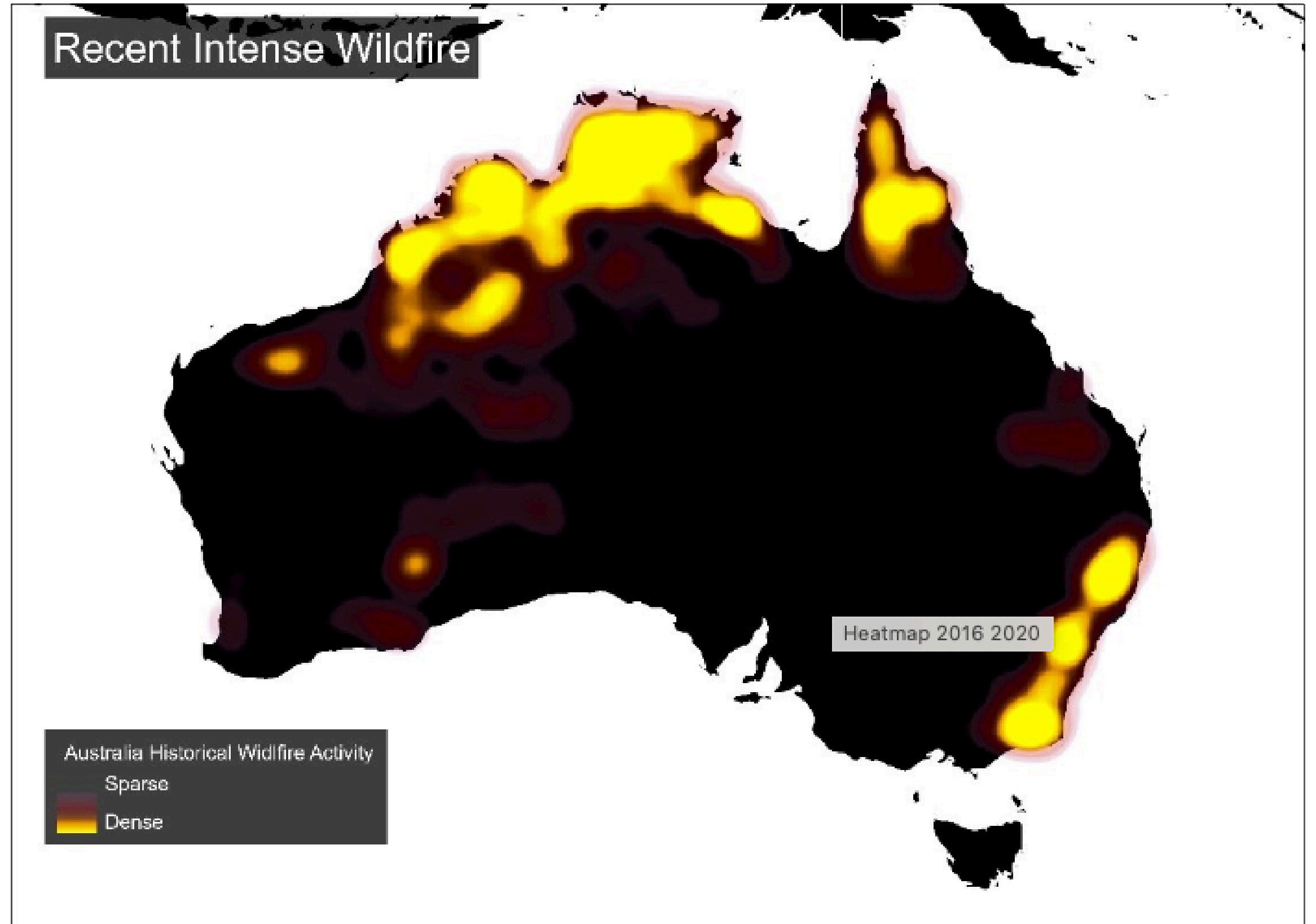
This map projects for each Australian suburb, the average number of hot and very hot days, and very hot nights by 2050 if existing action against climate change is maintained.



Source: [Climate Council](#)

Distribution of Bushfires

This map shows the intensity and distribution of bushfires in the years 2016-2020.

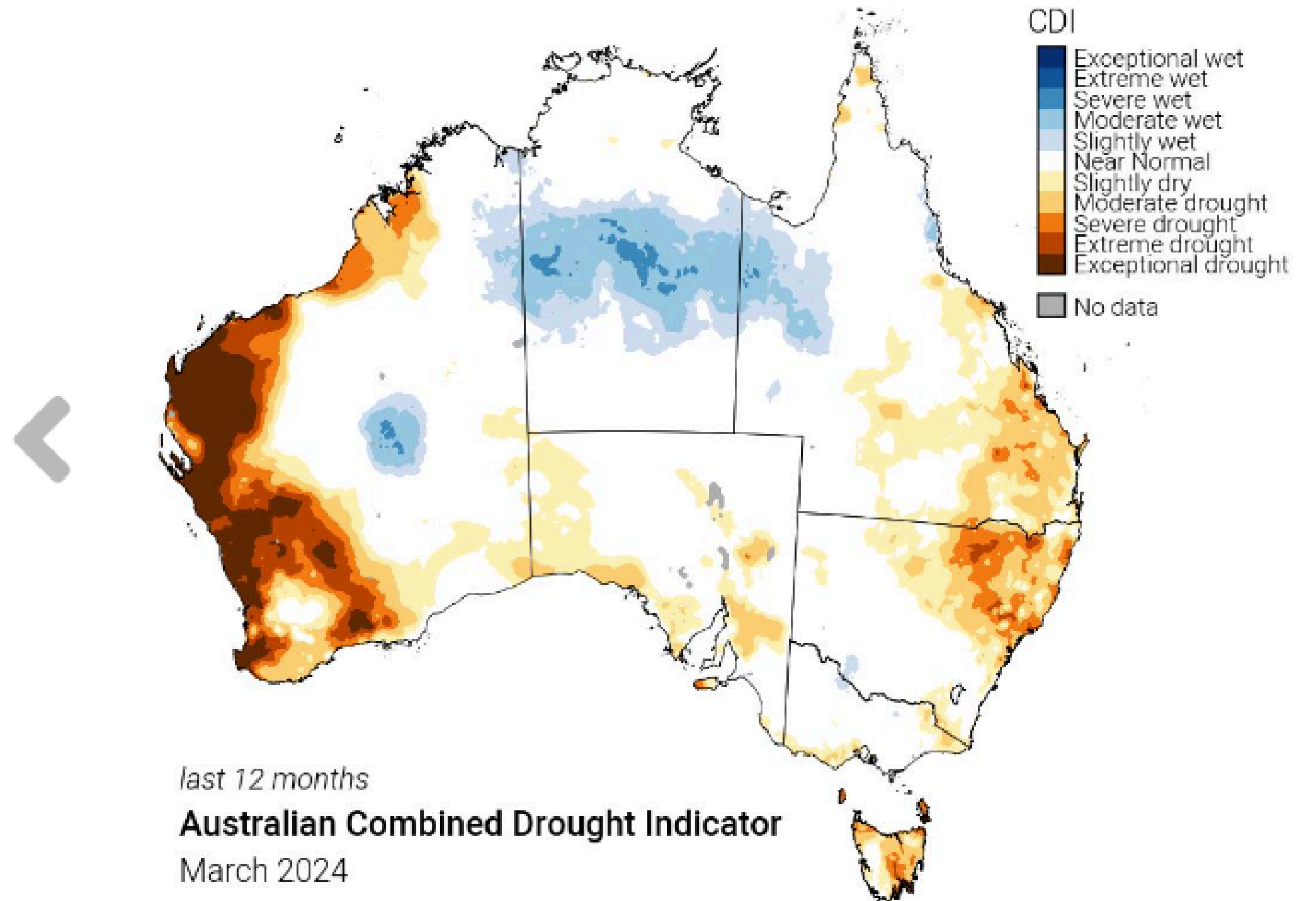


Source: [Crisis 24](#)

Australian Combined Drought Indicator

This map shows areas of drought over the last 12 months (March 2023-March 2024) using a combination of rainfall, soil moisture evapotranspiration and satellite data.

Drought Monitor



Source: [Northern Australia Climate Program](#)

Australia Standard Precipitation Index

This map shows areas of rainfall compared to normal rainfall over the last 12 months (March 2023-March 2024).

Drought Monitor

