

The Features of Teeth

How do teeth help us live in our environment?



Image source: Meg Jerrard, Unsplash

Carnivore

Only eats meat

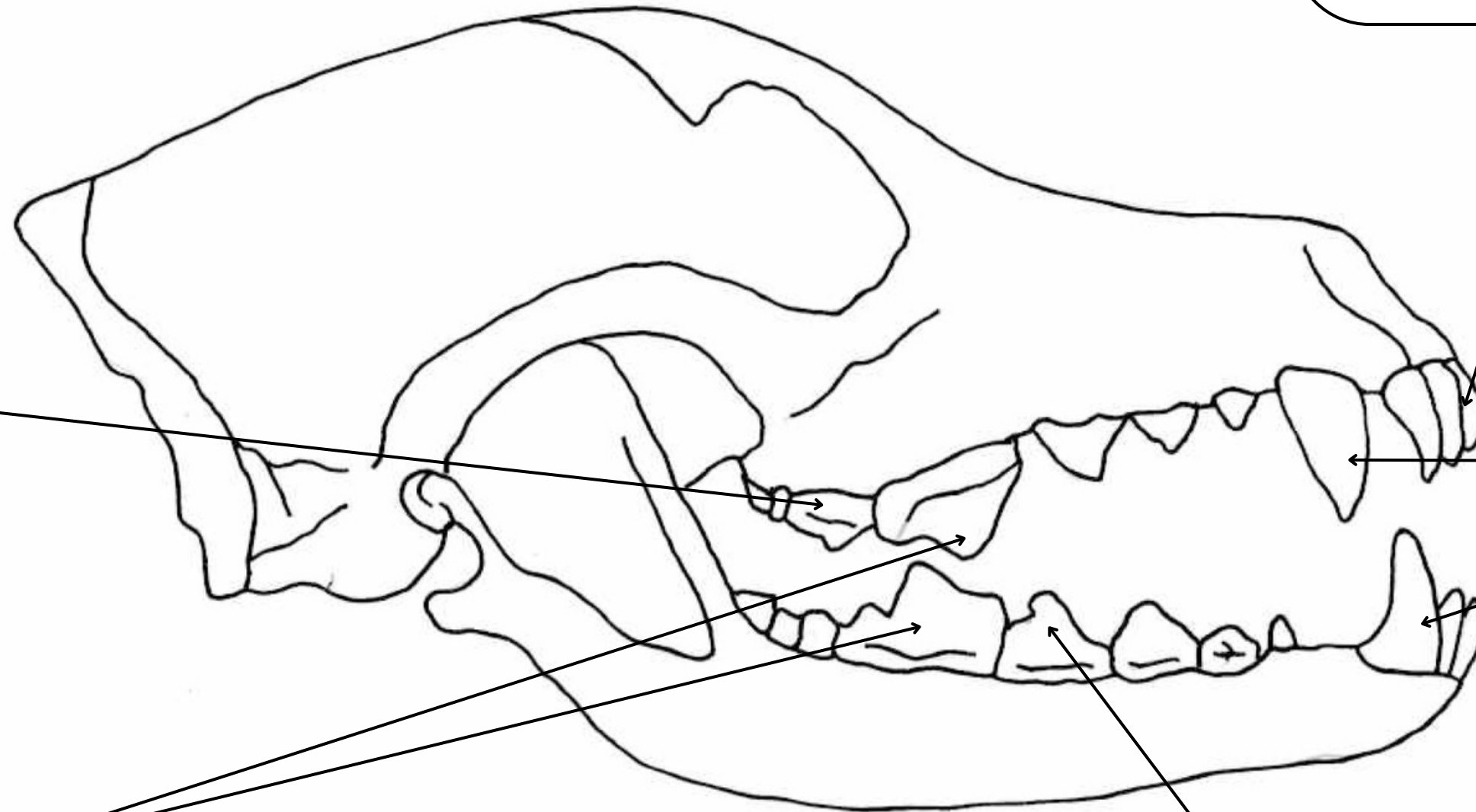
The teeth at the front are called incisors. These are used for pulling flesh from bones.

These teeth are called canines and are really good for piercing and holding onto prey tightly.

The molars at the back of the mouth are used to crush bones.

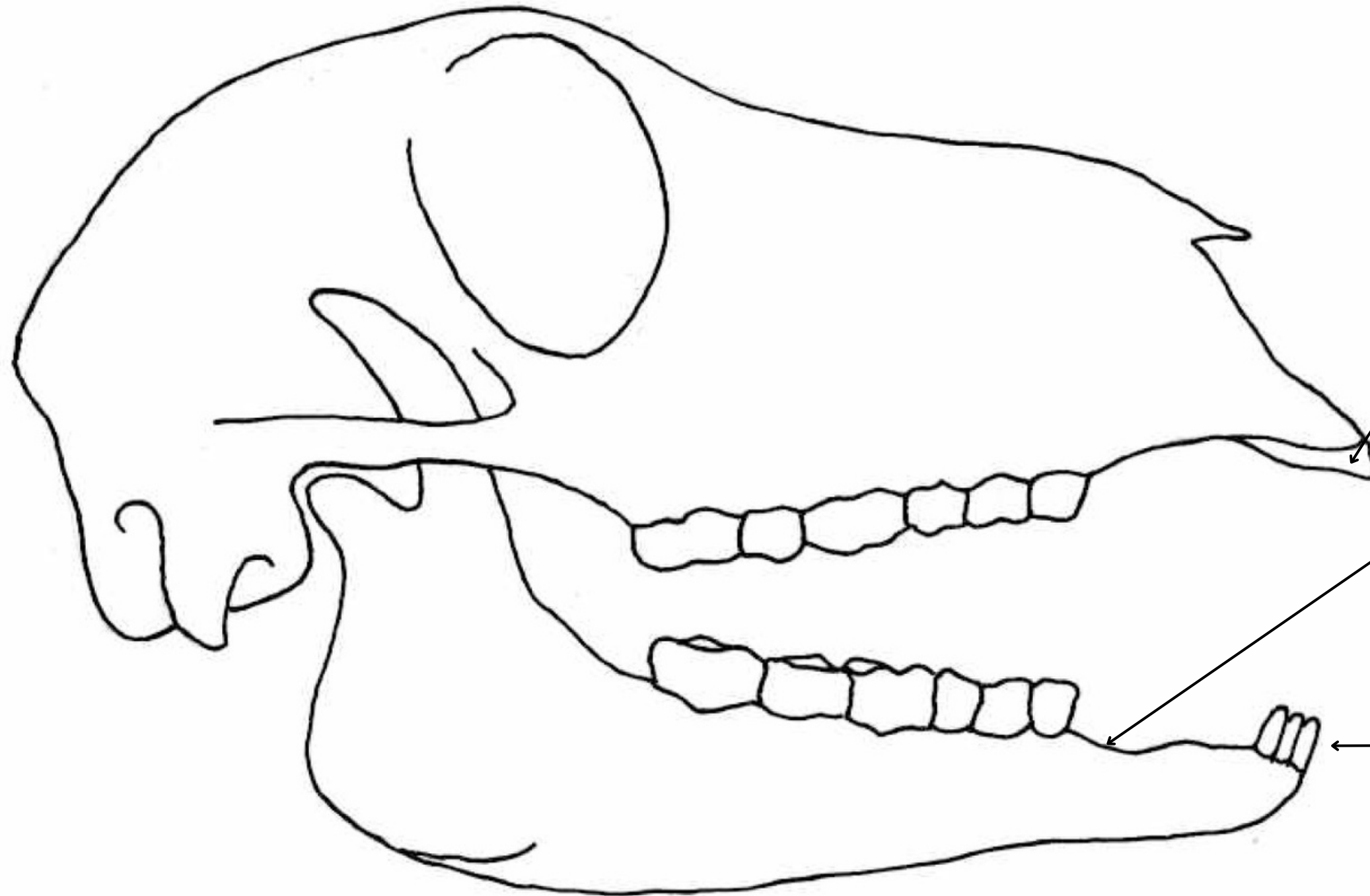
Between the premolars and molars is a large tooth called the carnassial; these huge and powerful teeth are used to pull flesh from bones.

The premolars work like scissors to cut flesh.



Herbivore

Only eats plants



On the top jaw there are no teeth! Instead, there is a rough pad. The incisors and canines on the bottom jaw have sharp edges for cutting grass against this pad.

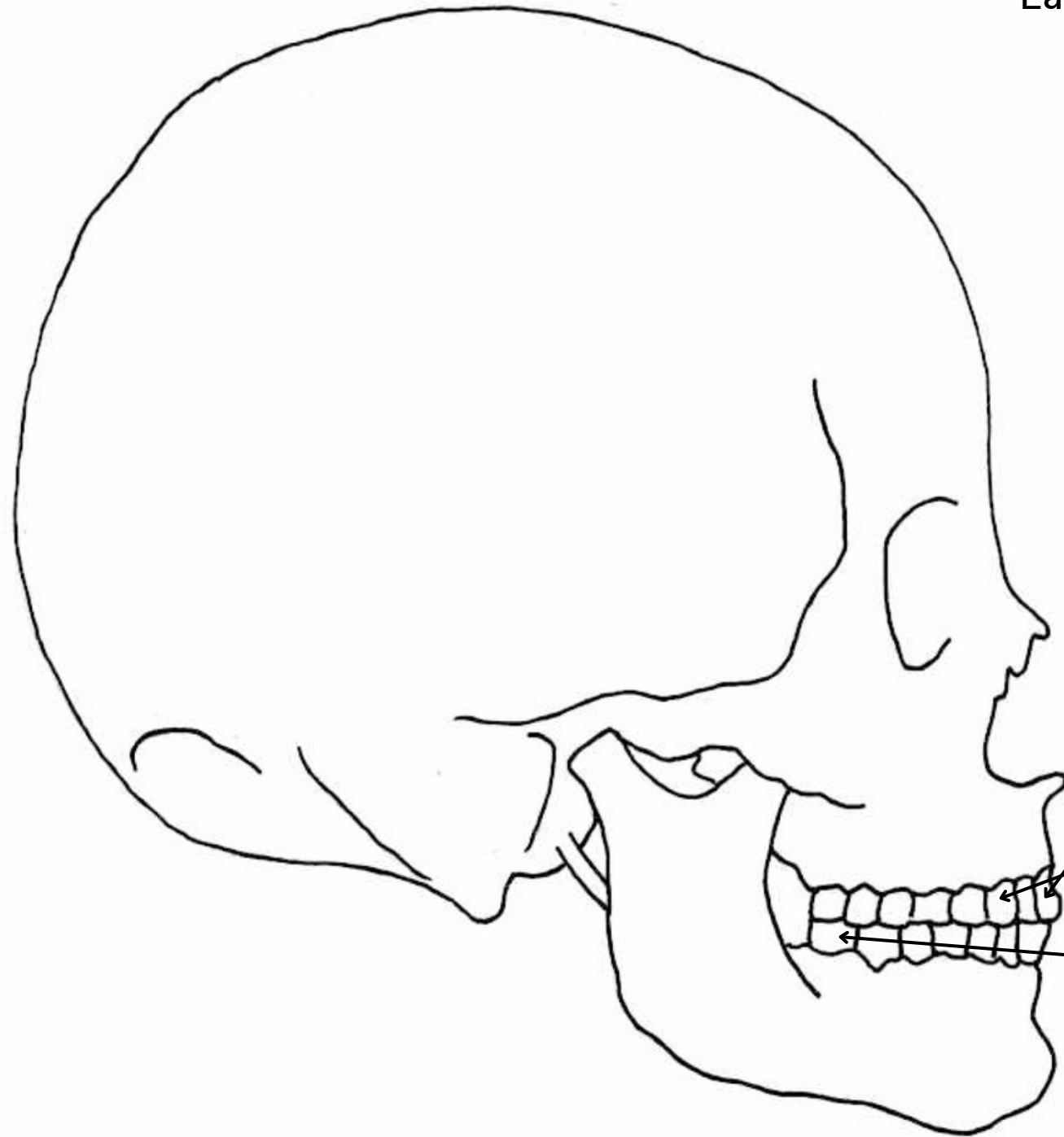
Herbivores have a space behind their front teeth. This is where their food goes before it is moved to the teeth at the back of the mouth (the molars and premolars) for chewing.

On the bottom jaw there are canines and incisors, however they look very similar.



Omnivore

Eats both plants and meat



Incisors at the front of the mouth are chisel-shaped and are used to bite and cut food.

The canines are pointy and are used to hold onto food.

The molars and premolars are used for grinding and crushing food.

